



TRANSPORTATION POLICY COMMITTEE

1:00 p.m., Thursday, August 28, 2008

KIPDA Burke Room

11520 Commonwealth Drive
Louisville, Kentucky 40299

See
<http://www.ridetarc.org/tripplan/>
**for TARC service to
KIPDA**

AGENDA

Kentucky
Member
Counties

Bullitt

1. *Call to Order, Welcome, Introductions*

Henry

2. *June 26 Meeting Minutes* – review and approval (see enclosed) - **Action requested.**

Jefferson

3. *Public Comment Period*

Oldham

Shelby

4. *Public Meeting/Comment Report* – A report on public involvement activities.

Spencer

5. *FY 2007-2011 Transportation Improvement Program* – Staff will present proposed administrative modifications (see enclosed).

Trimble

6. *Functional Classification System* – Staff will present a request from the City of Jeffersontown for additions to the street network functional classification system (see enclosed) – **Action requested.**

Indiana
Member
Counties

7. *Horizon 2030 Transportation Plan Update* - Staff will present information on the update of the long range plan (see enclosed) – **Action requested.**

Clark

Floyd

8. *Year of Expenditure Project Cost Estimates* – Staff will present an update on year of expenditure compliance for the transportation plan and the Transportation Improvement Program (see enclosed).

9. *Transportation Safety/Transportation Security* – Staff will present information on upcoming planning activities.

Equal
Opportunity
Employer

10. *Other Business*

11. *Adjourn*

Auxiliary aids/services are available when requested 3 business days in advance.

11520 Commonwealth Drive
Louisville, KY 40299
502-266-6084
Fax: 502-266-5047
KY TDD 1-800-648-6056
www.kipda.org



MINUTES
TRANSPORTATION POLICY COMMITTEE (TPC)
Thursday, June 26, 2008
KIPDA Conference Room
11520 Commonwealth Drive
Louisville, Kentucky 40299

Call to Order

Chair Patricia Fraser called the meeting to order at 1:00 p.m. and introductions were made. It was determined a quorum was present.

Review and Approval of Minutes

J.R. Ham, Kentucky Transportation Cabinet (KYTC), made a motion to approve the minutes of the April 24 meeting (see June packet). Paula Gish, Oldham County, seconded the motion and it carried with a unanimous vote.

Public Comment Period

There were no public comments.

Public Meeting/Comment Report

Josh Suiter, KIPDA staff, reported on the following recent and upcoming public involvement activities:

- Thursday, April 24 – Ohio River Bridges Open House, Frasier International Museum
- Wednesday, May 7 – Indiana Department of Environmental Management Draft Fine Particle Attainment Demonstration and Technical Support Document for the Indiana Portion of the Louisville KY-IN Fine Particle Nonattainment Area Public Hearing, Clarksville Branch Public Library
- Thursday, May 8 – Third Street Road/St. Andrews Church Road Area Study Public Input Session, St. Nicholas Academy
- Monday, May 19 – Mayor’s Community Conversation, Jeffersontown High School
- Wednesday, June 4 – TARC Fare and Route Changes Public Hearing, New Albany/Floyd County Library
- Thursday, June 5 – TARC Fare and Route Changes Public Hearing, Nia Center
- Wednesday, June 11 – TARC Fare and Route Changes Public Hearing, Bon Air Public Library
- Thursday, June 12 – TARC Fare and Route Changes Public Hearings, Metro Louisville Central Government Center
- Monday, June 16 – Mayor’s Community Conversation, Knight Middle School
- Thursday, June 19 – TRIMARC Public Assessment Meeting, Hampton Inn, New Albany

- Friday, June 20 – TRIMARC Public Assessment Meeting, Hampton Inn, Clarksville
- Monday, June 23 – Oldham County Government Community Connection Night, John W. Black Community Center
- Wednesday, June 25 – TRIMARC Public Assessment Meeting, Holiday Inn Southwest Fair Expo Center
- Wednesday, July 2 – Indiana Department of Transportation IN 111 Public Information Meeting, City/County Building, New Albany
- Tuesday, July 8 – TRIMARC Public Assessment Meeting, Hampton Inn on Hampton Lake Way, Louisville
- Monday, July 21 – Mayor's Community Conversation, Carter Elementary School

FY 2007-2011 Transportation Improvement Program (TIP)

Mary Lou Hauber, KIPDA staff, presented a proposed amendment to the short range programming document (see June meeting packet). **Paula Gish, Oldham County, made a motion to accept the proposed amendment. Bob Miller, City of Jeffersonville, seconded the motion and it carried with a unanimous vote.**

Intelligent Transportation System

Mary Lou Hauber, KIPDA staff, presented information for self-certification of ITS-related projects (see June meeting packet). There was discussion. **J. Byron Chapman, Jefferson County League of Cities, made a motion to certify that all ITS-related projects in the FY 2007-2001 TIP are included in the KIPDA Regional ITS Architecture. Jim Ude, Indiana Department of Transportation – Seymour, seconded the motion and it carried with a unanimous vote.**

FY 2009 Unified Planning Work Program

Harold Tull, KIPDA staff, provided an updated on proposed short range planning studies (see attached). There was discussion. **Ted Pullen, Louisville Metro Government, made a motion to endorse the proposed short range planning studies. J. Byron Chapman, Jefferson County League of Cities, seconded the motion and it carried with a unanimous vote.**

Louisville Metro Air Pollution Control District (APCD)

Erin Vachon, Louisville Metro Air Pollution Control District, provided an update on recent APCD activities. There was discussion.

Other Business

Mary Lou Hauber, KIPDA staff, provided information on administrative modifications to the FY 2007-2011 TIP. No action was required.

Harold Tull, KIPDA staff, provided committee members with copies of *The Transportation Planning Process: Key Issues* (Federal Highway Administration) and *2008 Indiana Logistics Directory* (Ports of Indiana).

J.R. Ham, KYTC, thanked the TTCC and KIPDA staff for the last 7 years of working with him. Mr. Ham will be KYTC's representative for the Northern Kentucky area. He introduced Amy Thomas as the new KYTC representative to the TPC.

Mary Lou Hauber, KIPDA staff, announced that there is a call for projects for Indiana Transportation Enhancement funding.

Adjournment

The meeting was adjourned at 1:35 p.m.

Harold Tull
Recording Secretary

Members Present:

Bob Miller	City of Jeffersonville
Krisjans Streips	City of New Albany
Bernard Bowling	City of St. Matthews
*Greg Rawlings	Federal Highway Administration – Kentucky
Jim Ude	Indiana Department of Transportation – Seymour
J. Byron Chapman	Jefferson County League of Cities
J.R. Ham	Kentucky Transportation Cabinet
*Matt Bullock	Kentucky Transportation Cabinet – District 5
Ted Pullen	Louisville Metro Government
Paula Gish	Oldham County
Patricia Fraser	Town of Clarksville

Members Absent:

Melanie Roberts	Bullitt County
Robert Hall	City of Charlestown
Clay Foreman	City of Jeffersontown
Sherry Conner	City of Shively
Hyun Lee	Clark County
*Tommy Dupree	Federal Aviation Administration – Memphis
*Larry Heil	Federal Highway Administration – Indiana
*Jay Anoka	Federal Transit Administration – Region 4
Stephen Bush	Floyd County
Karl Browning	Indiana Department of Transportation
*Charles Cash	Louisville Metro Planning & Design
J.D. Nichols	Regional Airport Authority
J. Barry Barker	Transit Authority of River City
*Krista Mills	US Department of Housing & Urban Development

Others Present:

Mayor Todd Eberle	City of Prospect
Mike Lyons	Disability Funders Network
Tony Young	Federal Highway Administration - Kentucky
David Whitworth	Federal Highway Administration - Kentucky
Amy Thomas	Kentucky Transportation Cabinet
John Callihan	Kentucky Transportation Cabinet – District 5
Gina Marie Guiles	KIPDA
Mary Lou Hauber	KIPDA
Josh Suiter	KIPDA
Harold Tull	KIPDA
Erin Vachon	Louisville Metro Air Pollution Control District
Kristi Ivey	Louisville Metro Government
Shawn Dikes	PB Americas
Doug Heberle	QK4
Adam Clayton	Strand Associates
Tim Emington	TRIMARC

* Denotes Advisory Members



MEMORANDUM

Kentucky
Member
Counties

TO: Transportation Policy Committee

FROM: Mary C. Hauber

Bullitt

DATE: August 20, 2008

Henry

SUBJECT: Administrative Modification of the FY 2007 – FY 2011 Transportation Improvement Program

Jefferson

Oldham

KIPDA has been informed of administrative modifications to be made to the FY 2007 – FY 2011 Transportation Improvement Program. Administrative modifications are changes that are considered relatively minor and no action is required of the MPO.

Shelby

Spencer

Trimble

Qualifying criteria for administrative modifications include the following actions:

Indiana
Member
Counties

- Correcting obvious minor data entry errors.
- Splitting or combining projects without modifying the original project intent.
- Changing or clarifying elements of a project description (with no change in funding). This change would not alter the original project intent.
- Moving a project from one federal funding category to another except for Surface Transportation Program (STP) dedicated urbanized area funding.
- Moving a project from federal funding to state funding.
- Shifting the schedule of a project or phase within the years covered by the STIP/TIP (with no impact to fiscal constraint).
- Adding Planning, Design, ROW or Utilities “phases” to a construction project that is already included in the STIP.
- Moving any identified project phase programmed for the previous year into a new TIP (rollover provision).
- Updating project cost estimates (within the original project scope and intent) that do not impact fiscal constraint.

Clark

Floyd

Equal
Opportunity
Employer

The changes to the Transportation Improvement Program are included on the attached table.

11520 Commonwealth Drive
Louisville, KY 40299
502-266-6084
Fax: 502-266-5047
KY TDD 1-800-648-6056
www.kipda.org



**Administrative Modification 9 - REVISED
FY 2007 - FY 2011 Transportation Improvement Program**

August 2008

KIPDA ID	State ID	Project	Description	Sponsor	Change to TIP
Indiana Projects					
1557		10th St.	Phase 3: Reconstruct & widen 10th Street from 4 to 5 lanes (5th lane will be a center turn lane) from Dutch Lane/Penn Street to Reeds Lane.	Jeffersonville	Increase FY 2008 Design to \$320,000 federal and \$400,000 total, change ROW to FY 2009 \$200,000 federal and \$250,000 total, and FY 2011 \$400,000 federal and \$500,000 total, STP-Urban funds
1417		10th St.	Signalize the intersection and add turn lanes at Thompson Lane.	Jeffersonville	Change funding from STP-Urban to local
550	9286340	CR 12, Old Vincennes Rd.	Phase 2 road reconstruction beginning at the east end of the completed Phase 1 and runs eastward 1 mile to a point east of Luther Rd.	Floyd Co.	Move ROW from FY 2008 to FY 2009, STP-Urban funds
308		Daisy Ln.	Reconstruct Daisy Lane as a 2 lane (no additional lanes) road from State Street to IN 111 (Grantline Road). Widening, profile correction, installation of curb & gutters, sidewalks with accessible ramps.	New Albany	Move FY 2008 Construction to FY 2010 and reduce from \$1,000,000 to \$500,000 STP-Urban funds
1538	0710264	I-64	Bridge maintenance and repair of I-64 bridge over the Ohio River.	INDOT	Change funding from STP-State to Bridge
1206	0200613	I-65	Vehicle purchase for the Hoosier Helper ITS Program	INDOT	Add FY 2009 \$115,000 STP-State funds
1496	0710263	I-65	Maintenance and repair of I-65 bridge over the Ohio River	INDOT	Additional funding, FY2009 PE \$300,000; FY 2009 Construction \$100,000, Bridge funds
1560	0710869	IN 60	Intersection improvement at Dow Knob Road. Including the addition of turn lanes	INDOT	Move FY 2008 PE to FY 2009 and increase from \$9,375 to \$75,000 STP-State funds
1565	0711017	IN 60	Intersection improvement at Perry Crossing Road including the addition of turn lanes.	INDOT	Move FY 2008 PE to FY 2009 and increase from \$15,000 to \$75,000 STP-State funds
1541	0800080	IN 60	Replace bridge over Persimmon Run, 4.93 miles west of IN 111.	INDOT	Change Des # from #0710296 to #0800080, Move PE from 2008 to 2009 and increase from \$10,000 to \$57,500 Bridge funds
1104	0100712	IN 60	Intersection improvement on IN 60 at St. Joe Road (east junction).	INDOT	Move PE from 2006 to 2007 and reduce from \$50,000 to \$40,000; Move ROW from 2007 to 2010, STP-State funds

8/21/2008
KIPDA

**Administrative Modification 9 - REVISED
FY 2007 - FY 2011 Transportation Improvement Program**

August 2008

KIPDA ID	State ID	Project	Description	Sponsor	Change to TIP
1537	0800072	IN 403	Rehabilitate bridge on IN 403 over Silver Creek, 0.98 miles east of US 31	INDOT	Breakout this bridge project from KIPDA #1537, Des #0710167, IN 403: Rehabilitate IN 403 from US 31 to IN 3. FY 2009 PE, \$175,000 Bridge funds
1556		Market St./Spring St.	Upgrade and designate Market Street and Spring Street as two-way streets from IN 111 to State Street.	New Albany	Move Design from FY 2008 to FY 2009, STP-Urban funds
95	0300779	McDonald Ln.	Reconstruct 2 lane road from Grantline Rd. to Charlestown Rd.	New Albany	Move ROW from FY 2010 to FY 2011 , STP-Urban funds
309	0710808	Mt. Tabor	Reconstruct 2 lane road from Grantline Rd. to Charlestown Rd.	New Albany	Move ROW from FY 2010 to FY 2011, STP-Urban funds
539	0400935	Salem-Noble Rd.	Reconstruct as a 2 lane road from IN 62 to IN 403	Clark Co	Add FY 2011 ROW \$300,000 federal and \$375,000 total STP-Urban funds
Kentucky Projects					
1275	1044.00	Bear Camp Rd.	Replace bridge on Bear Camp Rd. over Bear Camp Run	KYTC	Move 2007 ROW to 2008 and decrease from \$250,000 to \$30,000, Move 2007 Utilities to 2008 and decrease from \$200,000 to \$100,000, Bridge funds.
1434	73.00	I- 64	Expansion joint replacement, mill and overlay decks and miscellaneous repairs on the Riverside Expressway (I-64) bridges between KY 61 (Preston Street) and I-264 (Shawnee Expressway).	KYTC	Increase 2007 Construction from \$30,000,000 to \$58,042,400, IM funds
1403	2038.00	I- 64	Mill 1" thin overlay on I-64 from MP 20.765 in Jefferson Co. to MP 25.094 in Shelby County	KYTC	Move 2008 Construction to 2010 and increase from \$3,200,000 to \$3,500,000 IM funds

8/21/2008
KIPDA

**Administrative Modification 9 - REVISED
FY 2007 - FY 2011 Transportation Improvement Program**

August 2008

KIPDA ID	State ID	Project	Description	Sponsor	Change to TIP
1260	2034.00	I- 65	Rehabilitate I-65, repair & grind pavement from Mile Point 110.7 to Mile Point 115.77.	KYTC	Increase 2007 Construction from \$4,400,000 to \$7,727,570, IM funds
1453	2043.00	I- 65	Rehabilitate I-65, repair and grind pavement from MP 128.13 to MP 131.89.	KYTC	Move 2007 Construction to 2009 and increase from \$3,000,000 to \$3,250,000, IM funds
1439	2048.00	I- 65	Pavement Rehabilitation - mill 1" intermediate overlay on I-65 from MP 127.57 to MP 128.13.	KYTC	Move 2007 Construction to 2009 and increase from \$500,000 to \$550,000 IM funds
1440	2050.00	I- 65	Pavement Rehabilitation - repair and grind pavement on I-65 from MP 123.18 to MP 127.57.	KYTC	Increase 2007 Design from \$50,000 to \$300,000; Move 2007 Construction to 2009 and increase from \$1,600,000 to \$1,750,000, IM funds
1257	2049.00	I- 65	Rehabilitate I-65, repair & grind pavement from Mile Point 118.58 to Mile Point 123.18.	KYTC	Increase 2007 Design from \$50,000 to \$300,000; Move 2007 Construction to 2008, IM funds
1454	205.00	I- 65	Reconstruct second curve only on I-65 SB ramp at KY 1065 (Outer Loop) to improve the geometrics of the curve (change in horizontal alignment).	KYTC	Increase 2010 Construction from \$1,375,000 to \$1,550,000 IM funds
1456	2053.00	I- 71	Pavement rehabilitation - mill 2' intermediate overlay on I-71 from MP 0.0 to MP 5.55.	KYTC	Move 2007 Construction to 2010 and increase from \$2,220,000 to \$2,400,000, IM funds

8/21/2008
KIPDA

**Administrative Modification 9 - REVISED
FY 2007 - FY 2011 Transportation Improvement Program**

August 2008

KIPDA ID	State ID	Project	Description	Sponsor	Change to TIP
1016	15.00	I-264	Power wash & paint all steel bridges & steel bearings on I-264 (Henry Watterson Expressway).	KYTC	Move 2008 Construction to 2010 and increase from \$3,500,000 to \$3,790,000, IM funds.
1402	2036.00	I-264	Pavement rehabilitation from US 42 (MP 22.61) to I-71 (MP 23.24).	KYTC	Move 2008 Construction to 2010 and increase from \$333,000 to \$361,053, IM funds.
1532	2045.00	I-264	Repair and grind pavement on I-264 from MP 13.71(KY 864) to MP 18.41 (KY 1932).	KYTC	Move 2008 Design to 2010 and increase from \$50,000 to \$55,000; Move 2008 Construction to 2010 and increase from \$2,350,000 to \$2,550,000, IM funds.
1457	2047.00	I-264	Pavement rehabilitation - repair and grind pavement on I-264 from MP 12.7 to MP 13.71.	KYTC	Move 2008 Design to 2010 and increase from \$50,000 to \$55,000; Move 2008 Construction to 2010 and increase from \$505,000 to \$550,000, IM funds.
1459	2064.00	I-264	Pavement rehabilitation - repair and grind pavement on I-264 from MP 8.04 to MP 12.70.	KYTC	Move 2008 Design to 2010 and increase from \$75,000 to \$85,000; Move 2008 Construction to 2010 and increase from \$2,330,000 to \$2,525,000, IM funds.
131	28.00	I-264	Construct new I-264 (Henry Watterson Expressway) interchange at KY 1447 (Westport Road) adding an additional lane in each direction in the interchange area and add 300-500 feet of auxiliary lane on I-264 and a second off-ramp lane to US 42.	KYTC	Move 2007 Construction to 2009 and increase from \$25,000,000 to \$36,000,000, STP-State funds
1017	136.00	I-265	Power wash & paint all steel bridges & steel bearings on I-265 (Gene Snyder Fwy.).	KYTC	Move 2007 Construction to 2010 and increase from \$3,500,000 to \$3,790,000, State funds.
1441	2044.00	I-265	Pavement rehabilitation - repair and grind pavement on I-265 from MP 18.8 to MP 23.364.	KYTC	Move 2008 Construction to 2010 and increase from \$900,000 to \$975,000, IM funds.

8/21/2008
KIPDA

**Administrative Modification 9 - REVISED
FY 2007 - FY 2011 Transportation Improvement Program**

August 2008

KIPDA ID	State ID	Project	Description	Sponsor	Change to TIP
1437	2054.00	I-265	Pavement rehabilitation - Mill 1/2" intermediate overlay on I-265 from MP 25.35 to MP 26.60.	KYTC	Move 2008 Construction to 2010 and increase from \$1,000,000 to \$1,100,000, IM funds.
1438	2055.00	I-265	Pavement rehabilitation - repair and grind pavement on I-265 from MP 26.6 to MP 29.77.	KYTC	Move 2008 Design to 2010 and increase from \$50,000 to \$55,000; Move 2008 Construction to 2010 and increase from \$1,000,000 to \$1,100,000, IM funds.
1483	264.00	I-265	interchange as recommended by KIPDA's interchange study including the addition of 1 southbound lane on Bardstown Road from the Kroger Driveway to the I-265 westbound on-ramp.	KYTC	Increase 2009 Construction from \$1,000,000 to \$1,560,000 IM funds.
1212	1012.00	Interstate Traffic Management	Expansion of incident management program. Pay down of GE Capital lease used for initial construction of system.	KYTC	Increase 2008 funding from \$1,350,000 to \$1,410,000, CMAQ funds
1399	902.00	KY 155	Construct left turn lane on KY 155 at Tucker Station Road, 0.9 mile northwest of I-265 underpass in Louisville.	KYTC	Move 2007 ROW to 2008 and increase from \$40,000 to \$50,000, Move 2007 Utilities to 2008 and increase from \$40,000 to \$50,000, Increase 2008 Construction from \$550,000 to \$1,210,000, HES funds
1486	320.40	KY 22	Reconstruct KY 22, widening it from 2 to 3 lanes (3rd lane will be a center turn lane) from Hitt Road to Murphy Lane.	KYTC	Move 2007 Construction to 2009 increase from \$850,000 to \$920,000 State funds
151	28.10	KY 1447	Widen from 2 to 5 lanes from Hubbards to I-264	KYTC	Add Utilities \$1,500,000 fed. in FY 2008, and increase FY 2008 Construction to \$7,800,000 fed. STP-Urban funds
1109	505.00	Ohio River Levee Trail - Phase IIB & Phase III	Complete the ORLT, a shared use path along the Ohio River in West Jefferson Co. Phase IIB will run from Cane Run Road north to south of Lees Lane and Phase III will run from Chickasaw Park to Lees Lane	Lou. Metro Public Works	Add Design FY 2008 \$100,000 federal, move FY 2008 Construction to FY 2009 STP-Urban funds

8/21/2008
KIPDA

Administrative Modification 9 - REVISED
FY 2007 - FY 2011 Transportation Improvement Program

August 2008

KIPDA ID	State ID	Project	Description	Sponsor	Change to TIP
1255	1049.00	Old LaGrange Rd.	Replace bridge on Old LaGrange Road over branch of Goose Creek, 0.33 miles east of Lyndon Lane (KY 2050).	KYTC	Move 2007 ROW to 2008 and decrease from \$60,000 to \$20,000, Move 2007 Utilities to 2008 and increase from \$40,000 to \$115,000, Increase 2009 Construction from \$320,000 to \$440,000, Bridge funds.
1273	506.00	Olmsted Pkways. Multi-Use Path System	Construction of multi-use path connecting Algonquin, Southwestern, Southern, and Eastern Parkways with existing trails to create a continuous 30 miles of connected paths for pedestrians and bicyclists.	Louisville Metro Parks	Change FY 2009 ROW to Design, STP-Urban funds
1429	183.00	Signal System Improvements	Various signal system improvements in Jefferson County	KYTC	Move 2007 Construction to 2010 and decrease from \$875,000 to \$500,000, Move 2007 Construction to 2010 and increase from \$875,000 to \$910,000 State funds
1472		US 60A Corridor University of Louisville Improvements	Roadway improvements to US 60A (Eastern Parkway) from I-65 to Third Street including reducing the number of travel lanes from 4 to 2, bike/ped facilities, medians, and crosswalks, to provide for a safer, more pedestrian friendly campus for students.	KYTC	Increase 2007 Design to \$500,000 State funds, Move 2007 ROW to 2008 \$50,000 State funds, Move 2007 Utilities to 2008 \$50,000 State funds, Move 2007 Construction to 2009 \$1,840,000 federal, \$2,300,000 total, TE funds.
1542	287.01	US 31E	Phase 1: Realign and widen US 31E from 2 to 5 lanes from north of Bardstown (Nelson County) to Cox Creek and widen from 2 to 4 lanes from Cox Creek to Salt River Bridge. Phase 2: Reconstruct and widen US 31E from 2 to 5 lanes in Bullitt County beginning with the widening of the Salt River Bridge to 4 lanes to the existing 5 lane section at KY 44 in Mt. Washington.	KYTC	Move 2007 ROW to 2009 and reduce to \$13,680,000; Move 2007 Utilities to 2009 and reduce to \$2,860,000; Move 2008 Construction to 2010 and decrease to \$75,590,000; State funds

Administrative Modification 9 - REVISED
FY 2007 - FY 2011 Transportation Improvement Program

August 2008

KIPDA ID	State ID	Project	Description	Sponsor	Change to TIP
1256	1048.00	Wood Rd.	Replace bridge on Wood Road over Middle Fork of Beargrass Creek, 0.2 miles north of Whipps Mill Road.	KYTC	Move 2007 ROW to 2008 and increase from \$40,000 to \$47,500, Move 2007 Utilities to 2008 and increase from \$30,000 to \$65,000, Move 2009 Construction to 2010 and increase from \$230,000 to \$460,000, Bridge funds.



MEMORANDUM

Kentucky
Member
Counties

TO: Transportation Policy Committee

Bullitt

FROM: Harold Tull
Transportation Director

Henry

DATE: August 20, 2008

Jefferson

SUBJECT: Functional Classification System

Oldham

Shelby

Spencer

Trimble

“Functional classification is the process by which streets and highways are grouped into classes, or systems, according to the character of service they are intended to provide. Basic to this process is the recognition that individual roads and streets do not serve travel independently in any major way. Rather, most travel involves movement through a network of roads. It becomes necessary then to determine how this travel can be channelized within the network in a logical and efficient manner. Functional classification defines the nature of this channelization process by defining the part that any particular road or street should play in serving the flow of trips through a highway network.”

Highway Functional Classification – Concepts, Criteria and Procedures
U.S. Department of Transportation

Indiana
Member
Counties

The attached letter from Jeffersontown Mayor Clay Foreman requests Transportation Policy Committee endorsement of proposed changes in the roadway network functional classification system. TPC Chair Patricia Fraser referred the request to the TTCC for a recommendation. The TTCC recommended endorsement of the proposal on August 13th. The referenced study (City of Jeffersontown Transportation Study) can be reviewed at the KIPDA web site:

Clark

Floyd

http://www.kipda.org/Transportation/MPO/Documents_and_Studies.aspx

The final decision regarding functional classification system changes lies with the Kentucky Transportation Cabinet and the Federal Highway Administration.

Equal
Opportunity
Employer

Action is requested whether to endorse the City of Jeffersontown’s proposed changes to the functional classification system for consideration by the Kentucky Transportation Cabinet.

Attachments

11520 Commonwealth Drive
Louisville, KY 40299
502-266-6084
Fax: 502-266-5047
KY TDD 1-800-648-6056
www.kipda.org



CLAY S. FOREMAN
MAYOR



MATTHEW W. MEUNIER, PLS, AICP
ASSISTANT TO THE MAYOR

Small Town Values • Enterprising Spirit

OFFICE OF THE MAYOR

KIPDA
c/o Ms. Trish Fraser, Chair
Transportation Policy Committee
11520 Commonwealth Dr.
Jeffersontown, KY 40299

Dear Ms. Fraser,

Please accept this letter as the City of Jeffersontown's official request to update the functional classification of two existing roadway segments and a new roadway segment that will connect these existing routes. The existing roadway segments are Sprowl Road and Jefferson Street/Old Taylorsville Road. The new segment will connect these two routes by developing a collector level roadway that will improve the traffic and congestion being experienced at the intersection of Taylorsville Road and Watterson Trail in downtown Jeffersontown. This intersection is currently showing a level of service F and D in the AM and PM respectively.

Attached you will find a detailed transportation study prepared by the consulting firm of Qk4, along with detailed traffic counts, typical sections and various transportation improvements that will help alleviate the congestion on various downtown streets. Providing the additional collector level roadway, along with improving other local streets in and around downtown, will provide much needed circulation improvements in the town center. This new roadway and classification will give the City the ability to provide increased economic development benefits to the community, thereby improving the transportation network that supports existing and proposed commercial activities. The proposed route will intersect with three arterial level roadways (Taylorsville Road, Watterson Trail and Ruckriegel Parkway) creating an alternative route that will aid in reducing traffic at the intersection of Watterson Trail and Taylorsville Road in the heart of Jeffersontown. I have also attached several maps as exhibits indicating the proposed location of the request and their relative location to the surrounding downtown transportation network.

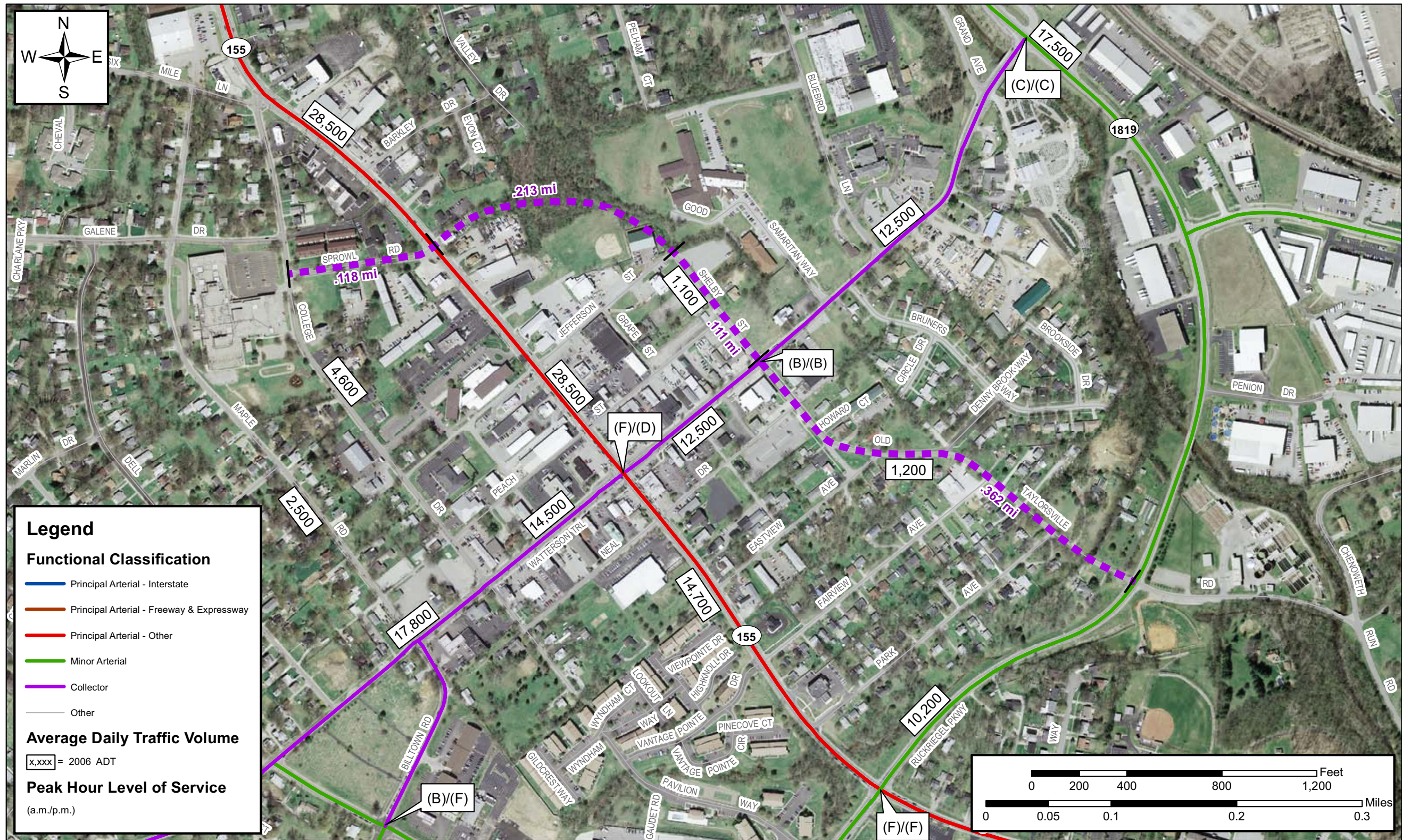
If you would like to discuss this request in more detail please feel free to contact me at 267-8333 or by email at cforeman@jeffersontownky.com.

Thanks for your time and consideration.

Sincerely,

A handwritten signature in black ink, appearing to read "Clay S. Foreman".

Clay S. Foreman
Mayor



Sprowl Road - Old Taylorsville Road Connector



MEMORANDUM

Kentucky
Member
Counties

TO: Transportation Policy Committee

Bullitt

FROM: David C. Burton, Transportation Planner
Stacey C. Burton, Transportation Planner

Henry

DATE: August 20, 2008

Jefferson

SUBJECT: Horizon 2035 Long-Range Transportation Plan Update Draft Scope of Work

Oldham

Shelby

At the April, 2008 Transportation Policy Committee meeting a draft scope of work for the update to the current *Horizon 2030 Long-Range Transportation Plan* update was presented and approved by the TPC. Since the adoption of the scope of work, KIPDA staff has been informed by the Federal Highway Administration of a significant change to how the SAFETEA-LU planning regulations define the horizon year of a long-range transportation plan. This new information has resulted in a necessary revision to the previously approved scope of work.

Spencer

Trimble

Indiana
Member
Counties

Clark

Prior updates to the long-range transportation plan, as defined by prior legislation, required that the plan have a horizon year that would provide for any amendments to an adopted plan to occur within at least a 20 year horizon. This necessitated that the plan span at least 23 years: the 20 year requirement for a long-range plan plus the additional 3 years after the plan was adopted and until an update had been approved. This is no longer the case as the SAFETEA-LU legislation stipulates that a long-range plan only needs to have a 20 year horizon at the time it is adopted and amendments to the plan can occur after it is adopted regardless if there are no longer 20 years remaining until the horizon year.

Floyd

Equal
Opportunity
Employer

The adopted scope of work identified a horizon year of 2035 in order to address the 20+ year requirement defined in the prior planning regulations. A 2035 horizon year is no longer necessitated and it is being proposed that the horizon year of the scheduled update remain as it exists in the current *Horizon 2030 Long-Range Transportation Plan* at 2030.

11520 Commonwealth Drive
Louisville, KY 40299
502-266-6084
Fax: 502-266-5047
KY TDD 1-800-648-6056
www.kipda.org



With a 2030 horizon year for the update, the planning process is modified from the adopted scope of work. Basically the proposed change is to modify the scope of work from developing new resources and identifying additional projects for the additional years relative to a 2035 horizon year to capturing any changes to resources used in the development of the current plan that may have changed since the Plan was adopted in 2005 and focusing on the existing projects, including, if necessary additions and deletions. Under the revised process, should any significant changes be identified the resources will be modified to reflect them. In terms of project development, the Transportation Policy Committee will be asked in the near future to determine whether the update currently underway should reflect any identified changes and significantly modify existing projects or if the TPC would like to proceed under the scenario of, for the most part, maintaining the current project list and update the existing projects to reflect any changes that have been proposed for them since the current Plan was adopted in 2005.

At this time it is anticipated that the update to the current long-range transportation plan will be completed as originally scheduled in August of 2009. Once the Transportation Policy Committee has addressed the issue of what direction they would like to the Plan to take, staff will modify the scope of work accordingly and present it to them for review and adoption.

At their August 13, 2008 Transportation Technical Coordinating Committee meeting, the TTCC voted unanimously to recommend the TPC revise the horizon year of the scheduled update from 2035 to 2030.

Action is sought from the Transportation Policy Committee to approve the revision of the horizon year of the scheduled update from 2035 to 2030.



MEMORANDUM

Kentucky
Member
Counties

TO: Transportation Policy Committee

FROM: Mary C. Hauber

Bullitt

DATE: August 20, 2008

Henry

SUBJECT: Administrative Modification to update the Horizon 2030
Transportation Plan and FY 2007 – FY 2011 Transportation
Improvement Program to year of expenditure costs

Jefferson

Oldham

Shelby

A requirement of the Safe, Accountable, Flexible, Efficient Transportation Act: A Legacy for Users (SAFETEA-LU) is to modify the Transportation Plan and the TIP to reflect Year of Expenditure. As the term implies, Year of Expenditure involves adjusting project costs and revenues in the Transportation Plan and TIP so that they reflect anticipated dollar amounts in the year in which they are scheduled to be expended.

Spencer

Trimble

Indiana
Member
Counties

The Kentucky Transportation Cabinet and the Indiana Department of Transportation were consulted concerning the rate adjustment that would be used in order to determine Year of Expenditure costs and revenues for all projects. Based upon input from the two state departments of transportation and a review of state and federal documents, adjustment rates were agreed upon and approved by the KIPDA Transportation Policy Committee at the January 24, 2008 meeting. Attached is the January 15, 2008 TPC memo with an explanation of the adjustment rates.

Clark

Floyd

Using the approved adjustment rates, the Transportation Plan and Transportation Improvement Program were modified to reflect adjusted costs and revenues. Both the *Horizon 2030 Long-Range Transportation Plan* and the *2007-2011 Transportation Improvement Program* maintain fiscal reasonableness after being adjusted for Year of Expenditure.

Equal
Opportunity
Employer

This administrative modification will place the KIPDA MPO in Year of Expenditure status as defined by SAFETEA-LU.

11520 Commonwealth Drive
Louisville, KY 40299
502-266-6084
Fax: 502-266-5047
KY TDD 1-800-648-6056
www.kipda.org





MEMORANDUM

Kentucky
Member
Counties

TO: Transportation Policy Committee

Bullitt

FROM: David Burton, KIPDA

Henry

DATE: January 15, 2008

Jefferson

SUBJECT: Year of Expenditure Adjustments for the *Horizon 2030 Long-Range Transportation Plan* and the *2007-2011 Transportation Improvement Program*

Oldham

Shelby

Spencer

Trimble

With the enactment of the Safe, Accountable, Flexible, Efficient Transportation Act: A Legacy for Users (SAFETEA-LU) KIPDA, along with all other Metropolitan Planning Organizations, was required to modify existing documents, including the Transportation Plan and TIP, to make them SAFETEA-LU compliant. KIPDA achieved SAFETEA-LU compliant status in April, 2007.

Indiana
Member
Counties

Another requirement of SAFETEA-LU is to modify the Transportation Plan and the TIP to reflect Year of Expenditure. As the term implies, Year of Expenditure involves adjusting project costs and revenues in the Transportation Plan and TIP so that they reflect anticipated dollar amounts in the year in which they are scheduled to be expended.

Clark

Floyd

The Kentucky Transportation Cabinet and the Indiana Department of Transportation were consulted concerning the rate adjustment that would be used in order to determine Year of Expenditure costs and revenues for all projects. Based upon input from the two state departments of transportation and a review of state and federal documents the following rates of adjustment were utilized:

Equal
Opportunity
Employer

Year of Expenditure in Indiana

Transportation Plan Project Costs:

- 3.5% cost increase compounded annually
- Project costs in the INDOT 2030 Long Range Transportation Plan (already adjusted for Year of Expenditure)

11520 Commonwealth Drive
Louisville, KY 40299
502-266-6084
Fax: 502-266-5047
KY TDD 1-800-648-6056
www.kipda.org



Transportation Plan Revenues

- 6% revenue increase compounded annually

Transportation Improvement Program Project Costs:

- Project Phases:
 - Design: 4% cost increase compounded annually
 - Right of Way: 5% cost increase compounded annually
 - Utility Relocation: 4% cost increase compounded annually
 - Construction: 4% cost increase compounded annually
 - Other phases: 4% cost increase compounded annually
- Project costs as provided by INDOT

Transportation Improvement Program Revenues

- 5% revenue increase compounded annually

Year of Expenditure in Kentucky

Transportation Plan Project Costs:

- 4% cost increase compounded annually

Transportation Plan Revenues

- 5% revenue increase compounded annually

Transportation Improvement Program Project Costs:

- Design: 4% cost increase compounded annually
- Right of Way: 5% cost increase compounded annually
- Utility Relocation: 4% cost increase compounded annually
- Construction: 4% cost increase compounded annually
- Other phases: 4% cost increase compounded annually

Transportation Improvement Program Revenues

- 5% revenue increase compounded annually

Both the *Horizon 2030 Long-Range Transportation Plan* and the *2007-2011 Transportation Improvement Program* maintain fiscal reasonableness after being adjusted for Year of Expenditure.

As sponsors develop revised Year of Expenditure costs projects in the Transportation Plan and the Transportation Improvement Program will be adjusted through administrative modifications.

With the action of the TPC to accept the methodology for achieving Year of Expenditure, KIPDA staff will proceed with modifying the *Horizon 2030 Long-Range Transportation Plan* and *2007-2011 Transportation Improvement Program* documents to include the Year of Expenditure costs and revenues generated from the above methodology. This action will place the KIPDA MPO in Year of Expenditure status as defined by SAFETEA-LU.

Action is requested.