

**LOUISVILLE WATER COMPANY PLANS**

### **Existing Water Infrastructure**

The Louisville Water Company implemented a County-Wide Extension Program beginning in 1990. This program was initiated in response to recommendations from the Water Service Task Force made up of elected officials, local fire officials and water and wastewater providers. The Task Force recommended a "modified urban" water system be installed for the area bounded by I-64, I-265, Bardstown Road, and the Jefferson County line. The "modified urban" design included a backbone of 12 and 16-inch water mains designed to deliver a minimum pressure of 40 psi and a minimum fire flow of 500 gallon per minute (gpm). These design parameters were determined to be adequate for low density residential development (5+ acre lots).

### **LWC Capital Improvement Plan 2007-2027**

To serve increasing demands in the LWC Service Areas located north of I-64 and south along the Bardstown Road corridor, the 2007-2027 Capital Improvement Plan (CIP) includes the construction of transmission mains along I-64 from the Gene Snyder Freeway to the Jefferson County Line and along Gene Snyder Freeway from Shelbyville Road to Billtown Road. The CIP also includes hydraulic improvements to the Bardstown Road corridor. The 2007-2027 CIP does not include any improvements in the Louisville Metro Eastern Thoroughfare Plan study area.

### **Impact of the Louisville Metro Eastern Thoroughfare Plan**

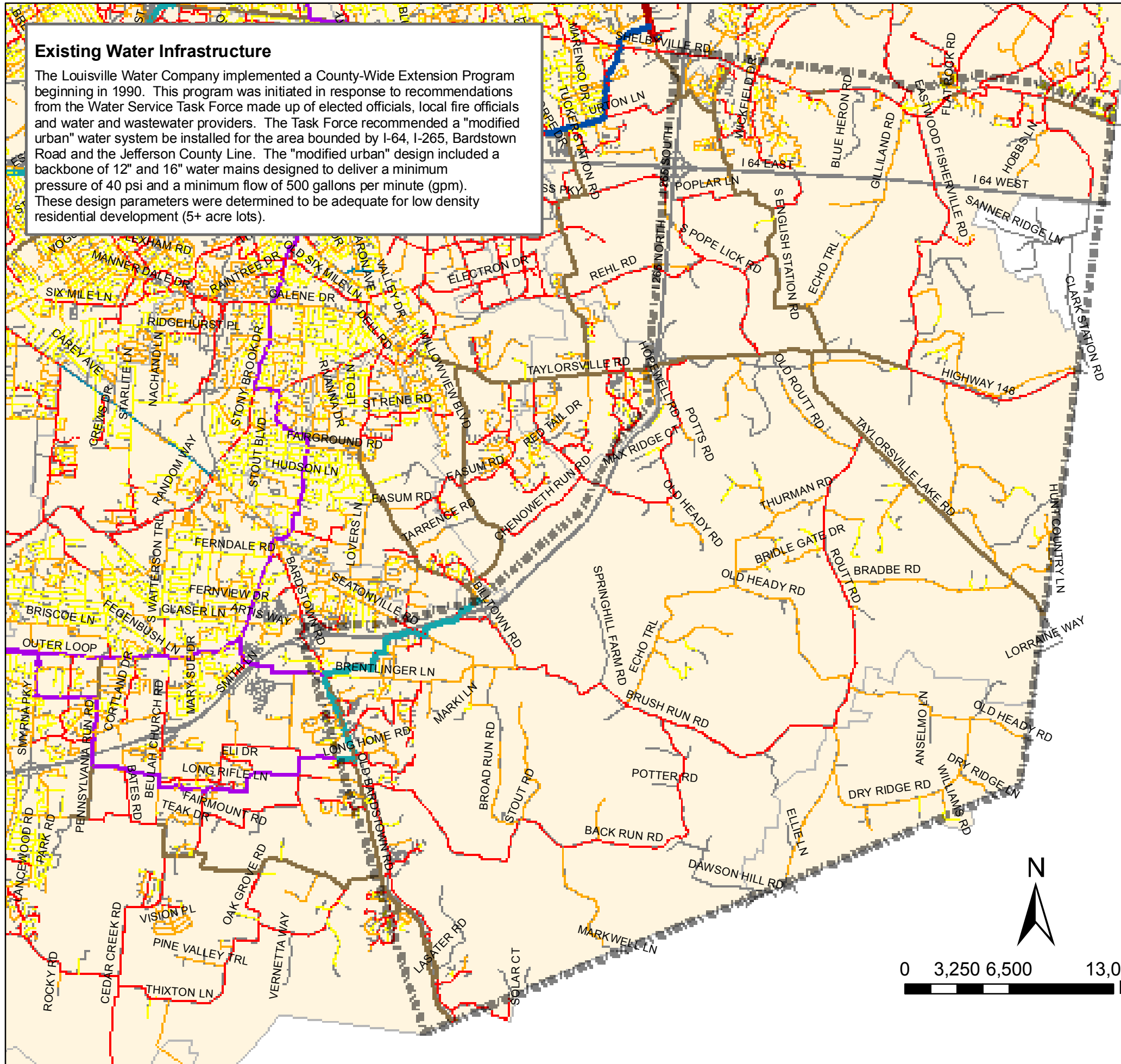
The original design for the water system in the study area allowed for small incremental expansions of the system to accommodate slightly higher than planned residential density. Expansions of this magnitude could be accomplished by an extension off the existing "backbone" network of 12 and 16-inch water mains to provide a small number of additional customers with the "modified urban" level of service. At some point, expansion of the "modified urban" would be limited by the hydraulic capacity of the original "backbone" system of 12 and 16-inch water mains.

To accommodate the level of development included in the Louisville Metro Eastern Thoroughfare Plan, LWC will need to convert the study area to an urban service area with a minimum of 40 psi and a minimum of 1,500 gpm fire flow. To this end LWC will need to install one or more additional north-south transmission mains, two to three booster pump stations and one or two elevated storage facilities within the limits of the study area. A new transmission main along the collector corridor that parallels the east side of the freeway could replace the transmission main originally planned for the west side of the Gene Snyder Freeway.

### Existing Water Infrastructure

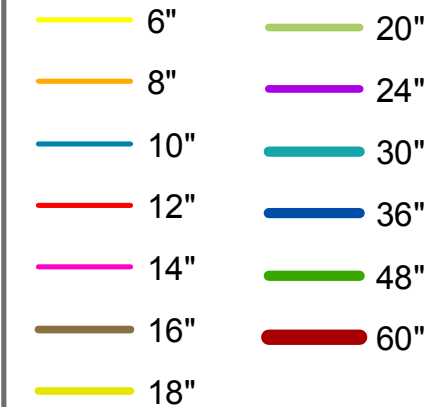
The Louisville Water Company implemented a County-Wide Extension Program beginning in 1990. This program was initiated in response to recommendations from the Water Service Task Force made up of elected officials, local fire officials and water and wastewater providers. The Task Force recommended a "modified urban" water system to be installed for the area bounded by I-64, I-265, Bardstown Road and the Jefferson County Line. The "modified urban" design included a backbone of 12" and 16" water mains designed to deliver a minimum pressure of 40 psi and a minimum flow of 500 gallons per minute (gpm). These design parameters were determined to be adequate for low density residential development (5+ acre lots).

## LOUISVILLE WATER COMPANY EXISTING WATER INFRASTRUCTURE



### Legend

#### Pressurized Main DIAMETER



1/14/2009

Copyright (c) 2009, LOUISVILLE AND JEFFERSON COUNTY METROPOLITAN SEWER DISTRICT (MSD), LOUISVILLE WATER COMPANY (LWC), LOUISVILLE METRO GOVERNMENT, and JEFFERSON COUNTY PROPERTY VALUATION ADMINISTRATOR (PVA). All Rights Reserved.



Louisville/Jefferson County Information Consortium (LOJIC), a Jefferson County, Kentucky, based cooperative project of:

Louisville/Jefferson Metro Government  
Louisville Water Company  
Metropolitan Sewer District  
Property Valuation Administrator

No part of this map may be reproduced or transmitted in any form or by any means, electronic or mechanical, including photocopying and recording, or by any information storage or retrieval system, except as expressly permitted in writing by MSD.

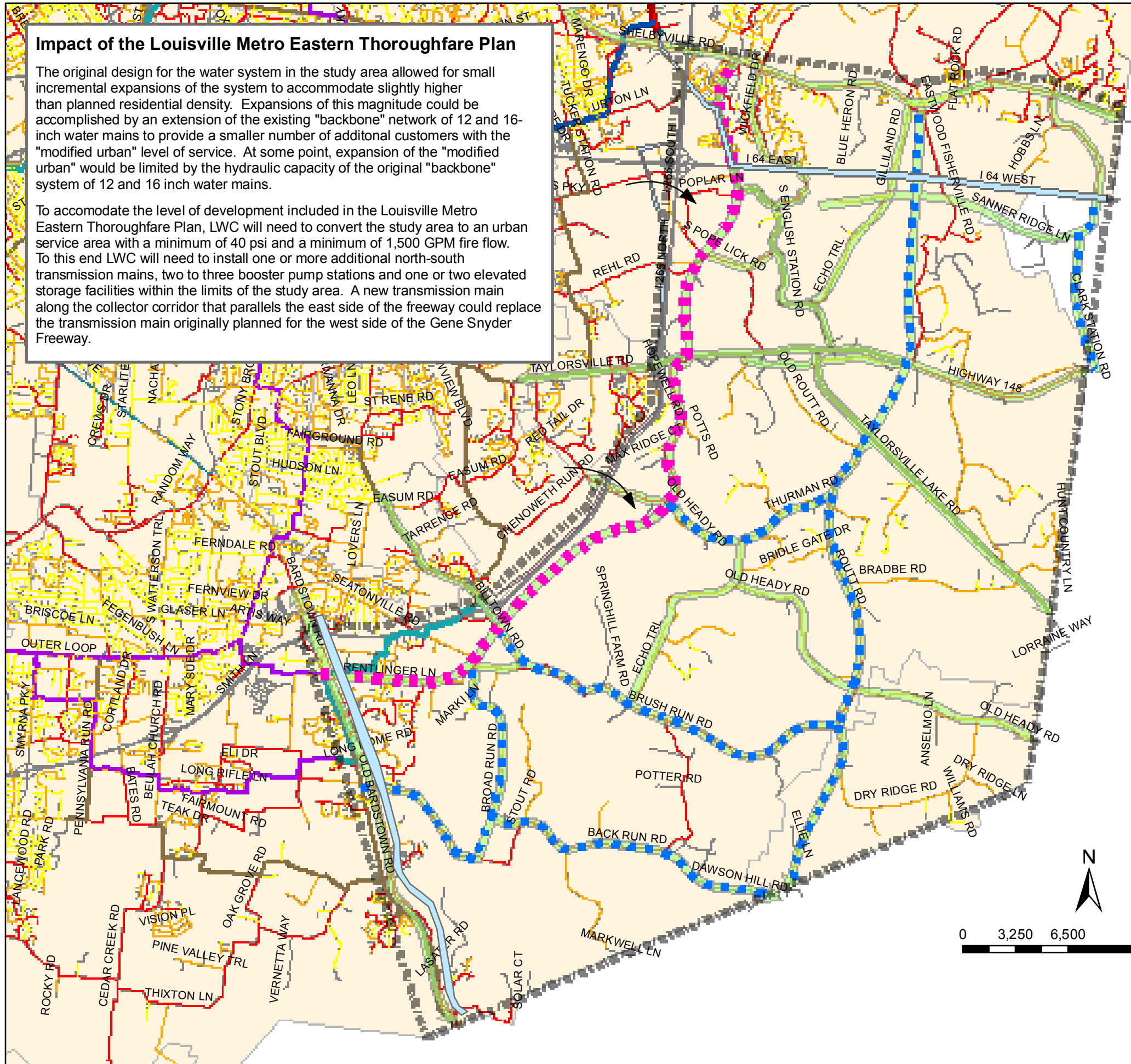


### Impact of the Louisville Metro Eastern Thoroughfare Plan

The original design for the water system in the study area allowed for small incremental expansions of the system to accommodate slightly higher than planned residential density. Expansions of this magnitude could be accomplished by an extension of the existing "backbone" network of 12 and 16-inch water mains to provide a smaller number of additional customers with the "modified urban" level of service. At some point, expansion of the "modified urban" would be limited by the hydraulic capacity of the original "backbone" system of 12 and 16 inch water mains.

To accommodate the level of development included in the Louisville Metro Eastern Thoroughfare Plan, LWC will need to convert the study area to an urban service area with a minimum of 40 psi and a minimum of 1,500 GPM fire flow. To this end LWC will need to install one or more additional north-south transmission mains, two to three booster pump stations and one or two elevated storage facilities within the limits of the study area. A new transmission main along the collector corridor that parallels the east side of the freeway could replace the transmission main originally planned for the west side of the Gene Snyder Freeway.

## LOUISVILLE WATER COMPANY IMPACT OF LOUISVILLE METRO EASTERN THOROUGHFARE PLAN



### Legend

- 2009-2028 CIP PROJECTS
- I-64
- Gene Snyder
- Bardstown Road
- PROPOSED THOROUGHFARE
- POTENTIAL GENE SNYDER TRANSMISSION MAIN ALTERNATE ROUTE
- OTHER TRANSMISSION MAIN

**Pressurized Main (Diameter)**

<span style="display: inline-block; width: 20px; height: 5px; background-color: yellow; border: 1px solid black;"></span> 6"	<span style="display: inline-block; width: 20px; height: 5px; background-color: brown; border: 1px solid black;"></span> 16"	<span style="display: inline-block; width: 20px; height: 5px; background-color: teal; border: 1px solid black;"></span> 30"
<span style="display: inline-block; width: 20px; height: 5px; background-color: orange; border: 1px solid black;"></span> 8"	<span style="display: inline-block; width: 20px; height: 5px; background-color: yellowgreen; border: 1px solid black;"></span> 18"	<span style="display: inline-block; width: 20px; height: 5px; background-color: blue; border: 1px solid black;"></span> 36"
<span style="display: inline-block; width: 20px; height: 5px; background-color: cyan; border: 1px solid black;"></span> 10"	<span style="display: inline-block; width: 20px; height: 5px; background-color: lightgreen; border: 1px solid black;"></span> 20"	<span style="display: inline-block; width: 20px; height: 5px; background-color: green; border: 1px solid black;"></span> 48"
<span style="display: inline-block; width: 20px; height: 5px; background-color: red; border: 1px solid black;"></span> 12"	<span style="display: inline-block; width: 20px; height: 5px; background-color: purple; border: 1px solid black;"></span> 24"	<span style="display: inline-block; width: 20px; height: 5px; background-color: darkred; border: 1px solid black;"></span> 60"

1/14/2009

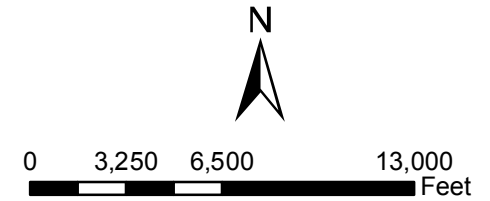
Copyright (c) 2009, LOUISVILLE AND JEFFERSON COUNTY METROPOLITAN SEWER DISTRICT (MSD), LOUISVILLE WATER COMPANY (LWC), LOUISVILLE METRO GOVERNMENT, and JEFFERSON COUNTY PROPERTY VALUATION ADMINISTRATOR (PVA). All Rights Reserved.

Louisville/Jefferson County Information Consortium (LOJIC), a Jefferson County, Kentucky, based cooperative project of:

- Louisville/Jefferson Metro Government
- Louisville Water Company
- Metropolitan Sewer District
- Property Valuation Administrator



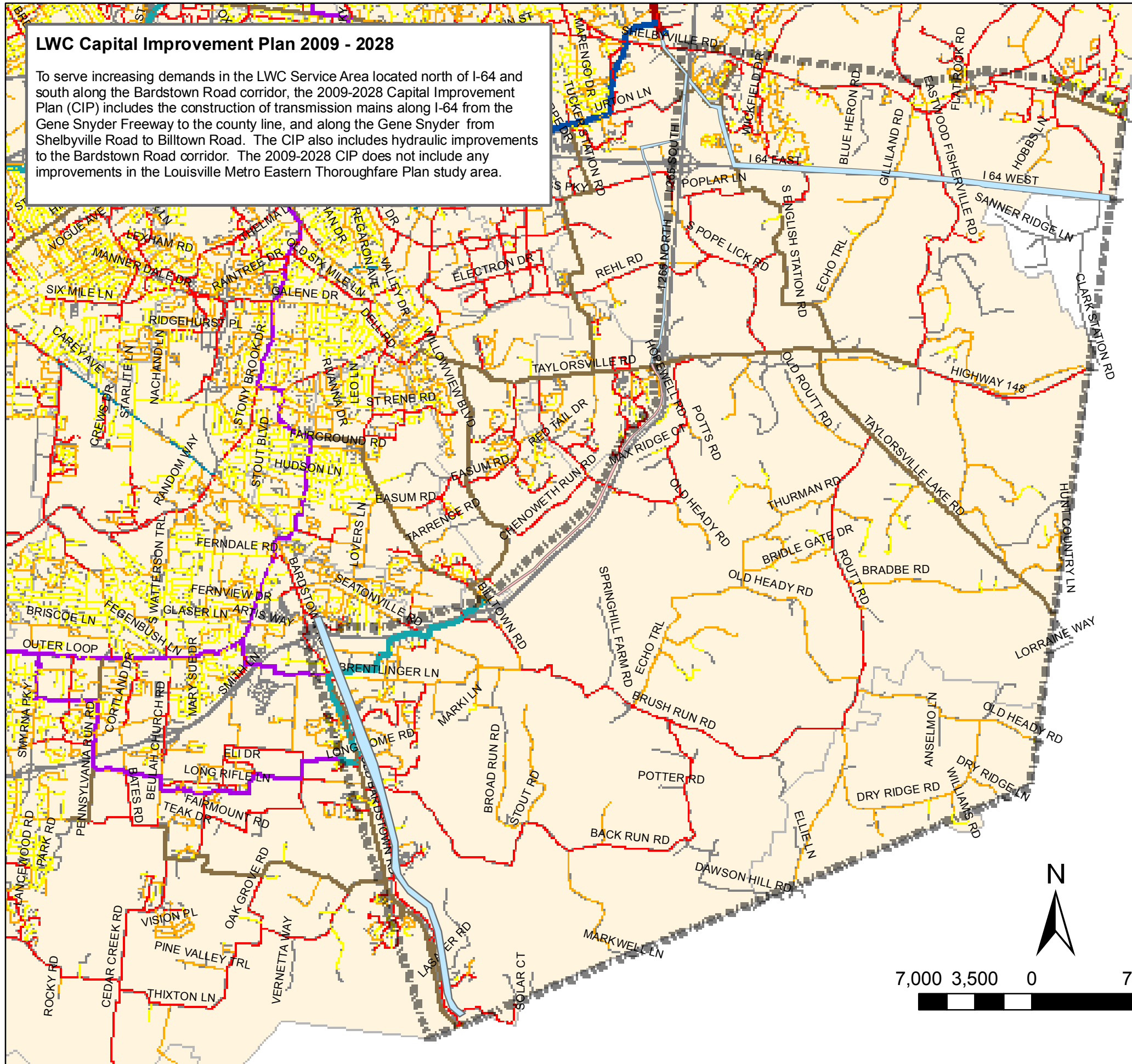
No part of this map may be reproduced or transmitted in any form or by any means, electronic or mechanical, including photocopying and recording, or by any information storage or retrieval system, except as expressly permitted in writing by MSD.



**LWC Capital Improvement Plan 2009 - 2028**

To serve increasing demands in the LWC Service Area located north of I-64 and south along the Bardstown Road corridor, the 2009-2028 Capital Improvement Plan (CIP) includes the construction of transmission mains along I-64 from the Gene Snyder Freeway to the county line, and along the Gene Snyder from Shelbyville Road to Biltown Road. The CIP also includes hydraulic improvements to the Bardstown Road corridor. The 2009-2028 CIP does not include any improvements in the Louisville Metro Eastern Thoroughfare Plan study area.

**LOUISVILLE WATER COMPANY  
CAPITAL IMPROVEMENT PLAN  
2009 - 2018**



**Legend**

- 2009-2028 CIP PROJECTS
- I-64 Transmission Main
- Gene Snyder Transmission Main
- Bardstown Road

**Pressurized Main  
DIAMETER**

- |     |     |
|-----|-----|
| 6"  | 20" |
| 8"  | 24" |
| 10" | 30" |
| 12" | 36" |
| 14" | 48" |
| 16" | 60" |
| 18" |     |

1/14/2009

Copyright (c) 2009, LOUISVILLE AND JEFFERSON COUNTY METROPOLITAN SEWER DISTRICT (MSD), LOUISVILLE WATER COMPANY (LWC), LOUISVILLE METRO GOVERNMENT, and JEFFERSON COUNTY PROPERTY VALUATION ADMINISTRATOR (PVA). All Rights Reserved.

Louisville/Jefferson County Information Consortium (LOJIC), a Jefferson County, Kentucky, based cooperative project of:

Louisville/Jefferson Metro Government  
Louisville Water Company  
Metropolitan Sewer District  
Property Valuation Administrator

No part of this map may be reproduced or transmitted in any form or by any means, electronic or mechanical, including photocopying and recording, or by any information storage or retrieval system, except as expressly permitted in writing by MSD.

